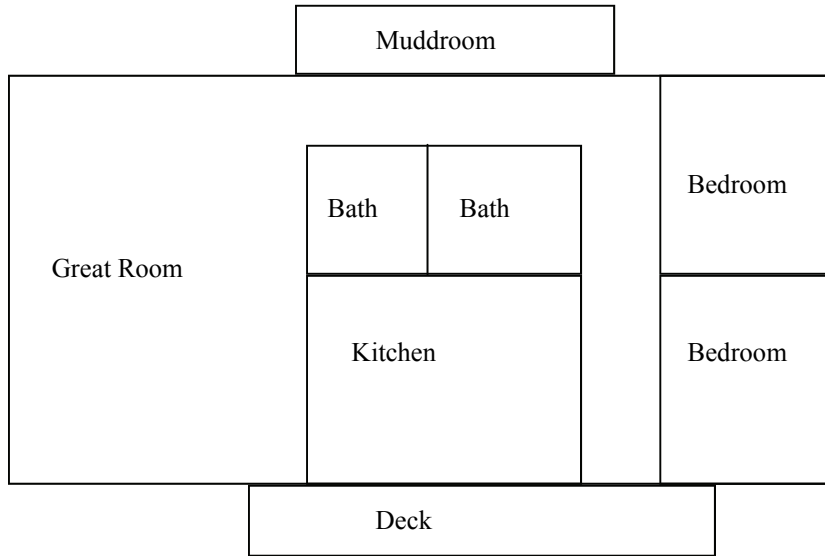


Cabin Floor Plans

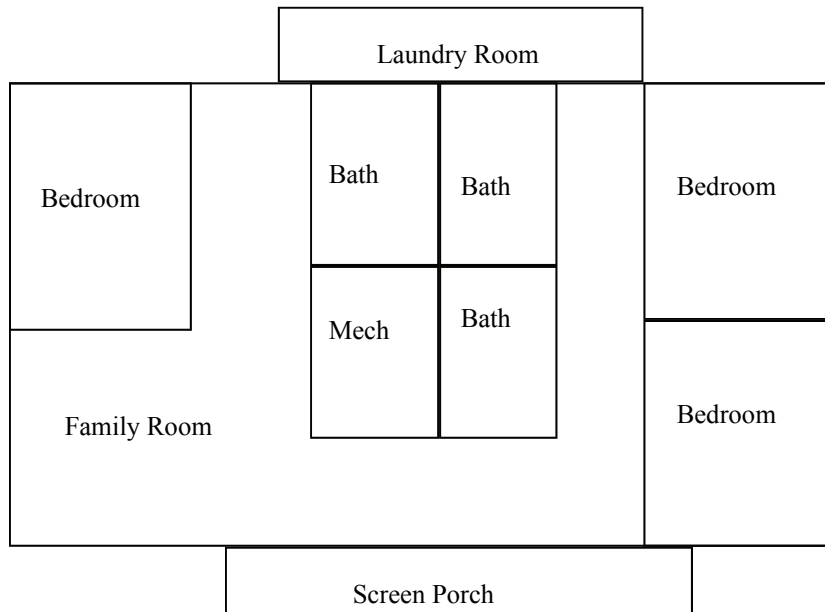
North Camp Cabins

Bridge Builder - Sleeps 24. Five bedroom, five bathroom, laundry with washer and dryer, screen porch, deck, kitchen with dishwashers, forced air and lower level radiant heat, air condition, bi-level, handicapped accessible, great room with fireplace, feeds up to 50 people. Upstairs Master Bed sleeps 2, queen bed. Upstairs bedroom sleeps 4. One double/twin bunk and one twin bed. All lower level bedrooms sleep 6. Each bedroom has 2 double twin bunks. (2 sleep on bottom of bunk and one sleeps on top)

Upper Level



Lower Level

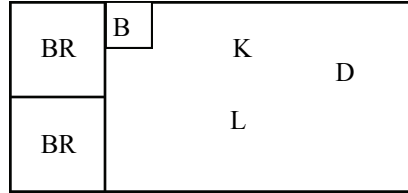


Key
 K- Kitchen
 L- Living room
 D- Dinning room
 BR- Bed room
 B- Bathroom
 P- Porch

Cabin Floor Plans Con't

North Camp Cabins Con't

Elm & Tamarack: Sleeps 6, two bedroom, shower/tub combo, kitchen, two bunk beds in one bedroom , two twin beds in master, deck

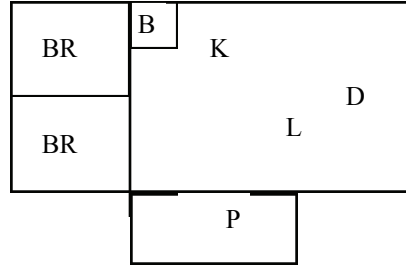


6 People
 Elm
 Tamarack

Pines: Handicapped accessible with ramps and air-conditioning. Sleeps 6, two bedroom, one queen bed in one bedroom, two bunk beds in one bedroom, bathroom, kitchen, screen porch.

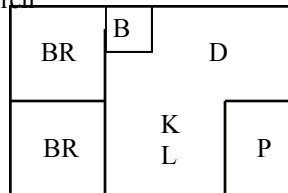
Willow: Sleeps 6, two bedroom, two twin beds in master bedroom, two bunk beds in other bedroom, bathroom, kitchen, screen porch.

Hickory & Spruce: Sleeps 6, two bedroom, one queen bed in one bedroom, two bunk beds in one bedroom kitchen, fireplace, bathroom, screen porch.



6 People:
 Willow
 Hickory
 Pines
 Spruce

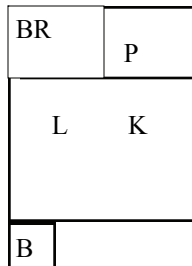
Lakeside, Hideaway, Redbird, Wildwood: Sleeps 6, two bedroom, two bunk beds in one bedroom, two twin beds in master, bathroom, kitchen, screen porch



6 People
 Wildwood
 Hideaway
 Lakeside
 Redbird

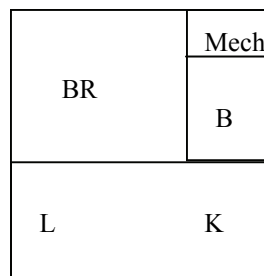
Hilltop & Lakeview:

Sleeps 4, one bed room, double size futon, one bunk bed bathroom, screen porch, fantastic lake view.



4 People
 Lakeview
 Hilltop

Black Cherry: Sleeps 5, one bedroom. Double/twin bunk in bedroom. Double futon in Living. Bathroom



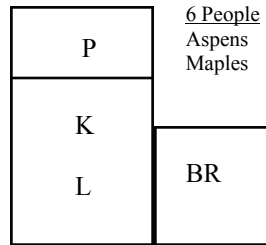
5 People
 Black Cherry

Key
 K- Kitchen
 L- Living room
 D- Dining room
 BR- Bed room
 B- Bathroom
 P- Porch

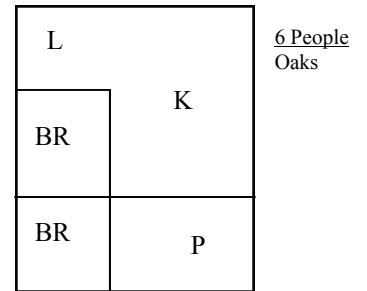
Cabin Floor Plans Con't

North Camp Cabins Con't

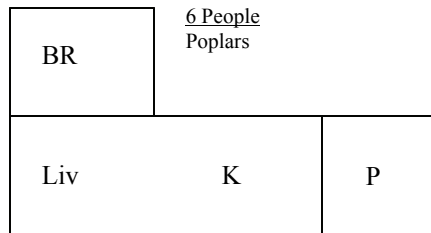
Aspens, Maples: Sleeps 6, one bedroom, double size futon, one bunk bed, screen porch, bathrooms nearby.



Oaks: Sleeps 6, two bedroom, one set of bunk beds in each bedroom, one double futon in living area, screen porch, bathrooms nearby, gorgeous lake view

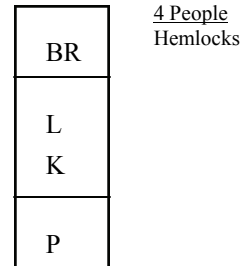
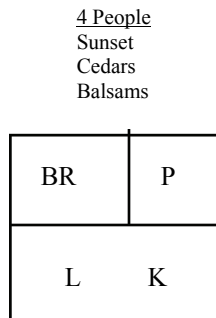


Poplars: Sleeps 6, One bedroom, two bunk beds in bedroom, and a double futon in living area, screen porch, bathrooms nearby, beautiful lake view.



Balsams, Cedars, Sunset, Hemlocks:

Sleeps 4, one bedroom, double size futon, one bunk bed, screen porch, bathrooms nearby, lake view.



Tent Sites:

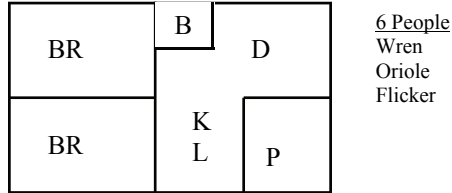
Tent sites are located in North Camp. Each site sleeps up to 4 people. Water supply and bathrooms are nearby. You must bring your own camping gear including dishes and coolers. There is no refrigeration provided. Tents only are allowed. No RV's.

Key
 K- Kitchen
 L- Living room
 D- Dining room
 BR- Bed room
 B- Bathroom
 P- Porch

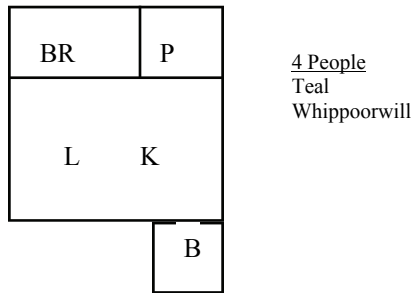
Cabin Floor Plans Con't

South Camp Cabins

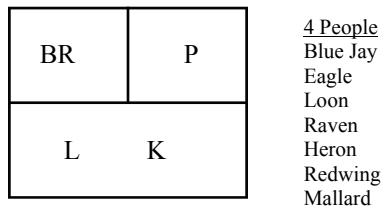
Flicker, Oriole, Wren: Sleeps 6, two bedrooms, one bedroom has two bunk beds , the other has two twin beds, bathroom, kitchen, screen porch, beautiful lake view.



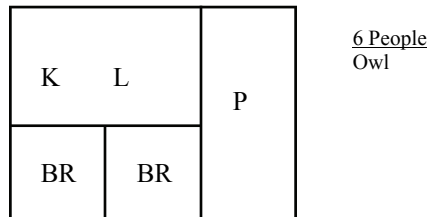
Teal & Whippoorwill: Sleeps 4, one bedroom, the bedroom has one bunk bed, bathroom, double size futon, screen porch, beautiful lake view.



Blue Jay, Eagle, Heron, Loon, Raven, Redwing, Mallard: Sleeps 4, one bedroom with one bunk bed, double size futon, screen porch, bathrooms nearby, lake view.



Owl: Sleeps 6, three bedroom, two bunk beds in one bedroom, two twin beds in the other bedroom, screen porch, bathrooms nearby, beautiful lake view.



Island: Sleeps 9, Three bedroom, two sets of bunk beds in one of the bedrooms, one bunk bed in one of the bedrooms, one bedroom with 2 twin beds, kitchen, queen size day bed, large screen porch, cabin on island, bathrooms nearby. Virtual 360° lake view!

